



Gregory C. Brett, Chief
Fire and Rescue/Emergency Management

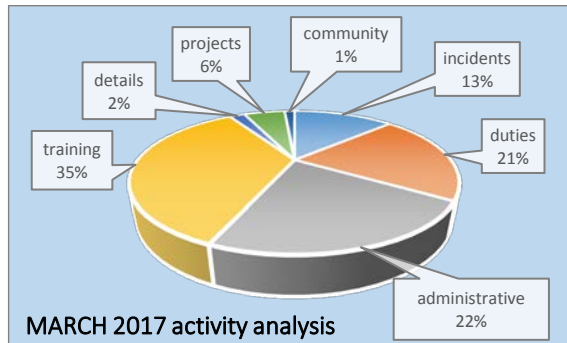
Regular City Council meeting • April 11, 2017

Fire Department

Incidents (2017 total incidents to date: 167)

MARCH 2017: 55 incident calls ... 39 hours

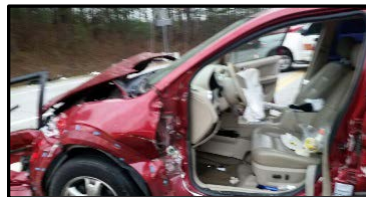
- **EMS – 18**
 - AMR transports – 12
 - CHFD transports – 0
 - Air/Medivac – 0
 - Deaths – 2
- **Fire – 22 (AA = 4, MA = 0)**
 - Structure/residential – 2
 - Structure/commercial – 0
 - Structure/outbuilding – 1
 - Woods/Grass – 8
 - Fire Alarm – 5
 - Smoke investigation – 1
 - Vehicle – 0
 - Other - 1
- **Rescue/Search – 1**
 - Cochran Mill Park - 1



- **Service – 12**
 - Trees down - 7
 - Wires down – 2
 - Lockout – 0
 - Invalid Assist – 2
 - Wellness check – 0
 - Water leak – 1
 - Gas leak – 0
 - Public Service – 4
 - Other – 0
- **Vehicle Accidents – 1**
 - Extrication – 1
- **HAZMAT – 0**
- **Other - 1**

Operations/Training

- Hydrant servicing/painting and annual “Business Fire Safety Inspections” continuing.
- Vehicle hydraulic extrication training occurred March 20-22. Training became reality two days later when a patient required extrication from a two-vehicle collision on South Fulton Parkway.
- Hose (pressure) testing to be conducted during April.



Personnel



- Mike Allen has been named “Acting Officer – A Shift” until a permanent Lieutenant is named effective July 1. Allen has been employed with CHFD since 2014; he retired from Fulton County Fire Rescue after 23 years of service.



- Paramedic/Firefighter Josh Whitley has accepted the position of “Training Division Director.” Whitley’s seven years of experience with CHFD and his training supervisory role for Newnan Fire Department will significantly improve annual training activity, records management and compliance with new, stringent *Georgia Fire Standards & Training Council* requirements.

Fire Services Delivery

- Woods/brush fires sometimes evolve into structure fires. CHFD recently responded on wildland fires on several occasions during March—some required assistance from Palmetto and Fulton County fire departments. **Burn ban starts May 1.**
- Recent severe weather involved CHFD on downed trees, power lines and one rescue of a Loon (bird).



Emergency Medical Services delivery

- Further refinements to the service level agreement (draft...negotiation) have yielded the following:
 - American Medical Response (AMR) will compensate CHFD and other departments for patient transports WHEN EXIGENT CRITERIA ARE MET.
 - AMR to assign increased number of “911 dedicated” units to south Fulton County
 - AMR/Fulton-911 dispatching to be improved using “bi-directional interface” between dispatch centers
 - Proposed 15 minute “maximum” for ambulance units to respond to CHFD scenes on BRAVO – ECHO incidents, 22 minute maximum for ALPHA incidents
 - AMR agrees to quarterly review of response statistics to evaluate for further improvement

REFERENCE: general sickness **ALPHA** → **ECHO** life threatening/immediate transport
- Search & Rescue (SAR) operations, especially in Cochran Mill Park, are required 6-8 times annually. Incidents always include multiple search teams and may include canine teams and helicopter operations. CHFD has developed a SAR protocol and resources for these operations including a protocol for 911 dispatchers. Training classes will be hosted by CHFD during May for fire, police and dispatch personnel.
- Support and patient assessments provided during recent DEA/GBI/CHPD drug bust.

Chattahoochee Hills Emergency Management Agency (CHEMA)

Communications

- CodeRed utilized extensively during recent storms. Enrollment efforts during February and March have expanded the notification roster by 25% ... TELL YOUR FAMILY, FRIENDS AND NEIGHBORS TO ENROLL.

Incidents

- CHEMA “Emergency Operations Center” (EOC) established during 03APR and 05APR storms. Support operations included the following (see *CHEMA-EOC incident log, 05APR2017*):
 - Staffed EOC from 06:00 – 24:00
 - Uninterrupted monitoring of weather radar and NWS alerts
 - Direct communications with Atlanta-Fulton County Emergency Management Agency (AFCEMA) and National Weather Service (AFCEMA)
 - Shelter operators (Providence Baptist Church Fellowship Center) placed on standby
 - CodeRed alerts issued for all WATCHES and WARNINGS of any type
 - Ongoing visual and computer-based monitoring of river/stream flood stages and various flood plains
 - Coordinated response with CHFD, CHPD, Public Works and Greystone Power for resident “wellness check,” road closures, tree removal and wires down
 - Post-event FEMA/GEMA reporting completed via AFCEMA

Weather Awareness

As a thunderstorm grows, updrafts will push water droplets into a region of the atmosphere which is below the freezing temperature. These water droplets collide with other droplets just before freezing, which is why some hailstones can grow to **several inches in diameter**. The stronger the updraft associated with a thunderstorm the larger the hail associated with the storm will be. Although the typical size of hail in Georgia is approximately one to two inches in diameter, it is not difficult to imagine the damage or injuries which can be caused by hail when you consider that hail may fall at speeds greater than 100 mph.

When a **SEVERE THUNDERSTORM WARNING** is issued, large hail may pelt you, your home, your pets, and your property. These warnings are issued when a severe thunderstorm is indicated by radar, or reported by a reliable source. Move to a safe place immediately. If time permits, consider moving vehicles into sheltered areas (garages, carports, etc.) and provide shelter for pets.

Hail Size Chart	
Pea	0.25"
Penny/Dime	0.75"
Quarter	1.00"
Half Dollar	1.25"
Golfball	1.75"
Tennis Ball	2.50"
Baseball	2.75"
Grapefruit	4.00"