



Fire, Rescue & EMS

City Council Report, February 2021 • Greg Brett, Chief • greg.brett@chatthillsga.us

January Incidents: 44

EMS – 29

- Grady transports – 23
- CHFD transports – 0
- Patient Refusal - 3
- Air/Medivac – 0
- COVID related - 12
- Deaths – 1
- Other – 1 (Cx)

Service – 8

- Trees down - 0
- Wires down – 1
- Lockout – 0
- Invalid Assist – 4
- Wellness check – 0
- Water leak – 3
- Gas leak – 0
- Public Service – 0
- Other – 0

Fire – 5

- Structure/residential – 1
- Structure/commercial – 0
- Structure/outbuilding – 0
- Woods/Grass – 1
- Fire Alarm – 4
- Smoke investigation – 0
- Vehicle – 0
- Sprinkler system – 0
- Illegal burn – 0
- Other – 0

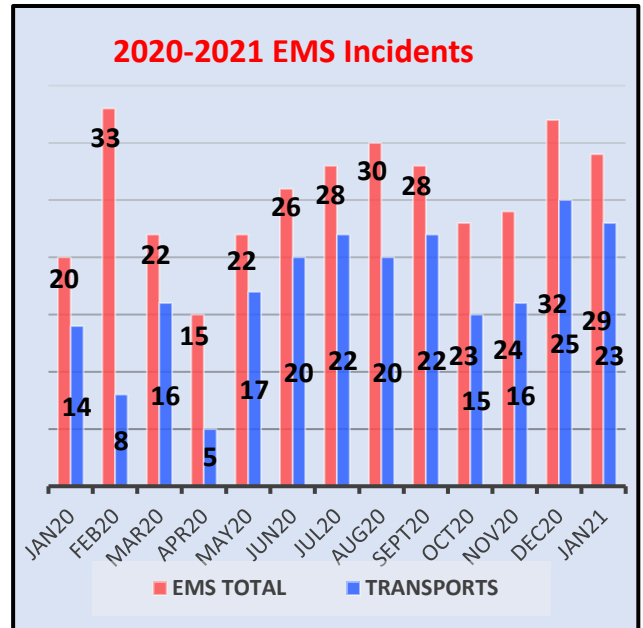
Vehicle Accidents – 2

- Extrication – 0

HAZMAT – 0

Rescue/Search – 0

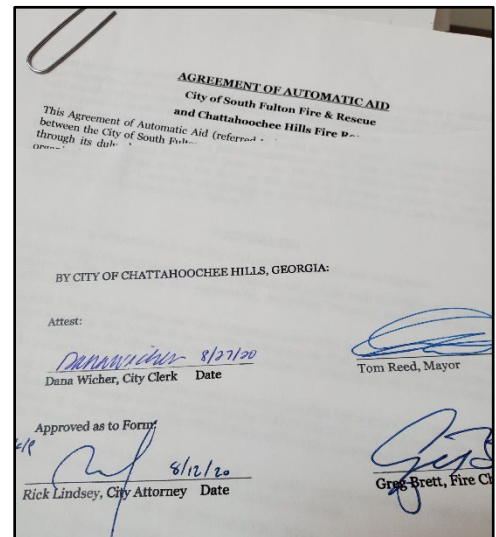
Other - 0



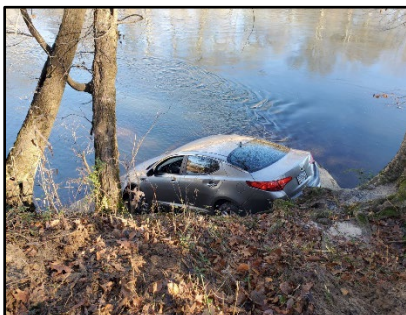
Fire Dept Automatic Aid A Reality

The “Automatic Aid” agreement with the City of South Fulton for support fire services is finally in place. The agreement will provide several advantages for Chattahoochee Hills, and residents of South Fulton, yielding increased fire resources at fire scenes.

Homeowners in the northern areas of Chattahoochee Hills, specifically those located within five miles of Station 8 at 8675 Ridge Road, should notify their insurers of the agreement and potentially negotiate lower rates. In exact terms, should there be a fire incident in Chattahoochee Hills’ northern fire zone (areas of Cochran Mill Rd, Cedar Grove Rd, Campbellton area, and Cascade-Palmetto Hwy), South Fulton Station 8 would be simultaneously dispatched with Chattahoochee Hills and Palmetto units. That dual dispatch puts the closest fire units on scene quick, and with the combined advantage of fire hydrants located in those areas, home/property owners effectively get a “Class 1” response. Chattahoochee Hills’ Fire Department responds to fire incidents within a defined area of City of South Fulton, also.



Email Chattahoochee Hills Fire Chief Greg Brett (greg.brett@chatthillsga.us) if you need more information, or download a copy of the executed agreement from our City’s website (www.chatthillsga.us).



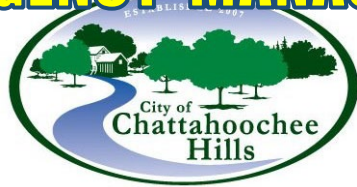
Car in The River? Yep!

Chattahoochee Hills has variety, if nothing else. Occasionally, the Fire/EMS Department gets one of those “unbelievable” calls that you just have to see, such as a car in the Chattahoochee River. No occupant(s), of course—the car was stolen in Douglas County.

Then, there’s the time a Shetland pony was rescued from a mud hole. When the pony was freed from the mucky mire, he was too tired to walk. So, four firemen carried the pony on a long spine-board to a nearby barn. No kidding!

Whatever, whenever ... your Fire Department is always ready!

EMERGENCY MANAGEMENT



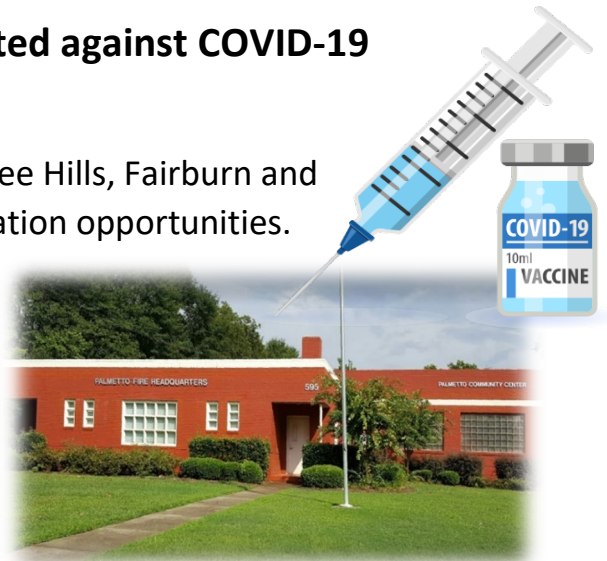
	GEORGIA	FULTON	CHATT HILLS
CASES	746,867	67,950	112
DEATHS	12,568	894	3

Right now you can schedule to be vaccinated against COVID-19 by your local healthcare partners.

YourTown Health is partnered with Chattahoochee Hills, Fairburn and Palmetto to provide easy registration and vaccination opportunities.

Vaccinations are administered
Tuesday – Saturday BY APPOINTMENT ONLY
 at the Palmetto Community Center

YOU MUST PRE-REGISTER



Palmetto Community Center, 595 Roosevelt Hwy

To schedule **YOUR** vaccination ...

- ONLINE: <https://www.yourtownhealth.com/covid-19-vaccines/>
- PHONE: 770-463-4644

A caring, efficient program adapted locally for you by trusted community healthcare partners



AS OF FEB 1, 2021, VACCINATIONS ARE GIVEN TO THESE GROUPS ONLY –

PHASE 1A (FEBRUARY 2021)

- Healthcare personnel and long-term care facility
- Adults 65 and older
- Paid/Unpaid healthcare workers with direct/indirect exposure potential (nurses, physicians, EMS)
- Long-term care facilities staff and residents
- First Responders (fire, police, sheriff, 9-1-1 personnel, etc.)

PHASE 1B (FEBRUARY 2021)

- People who play a key role in keeping essential functions of society running, including critical workforce employees (educational faculty/staff, court employees, nuclear power plant employees, air traffic controllers, food processing, grocery workers, transportation, etc.)